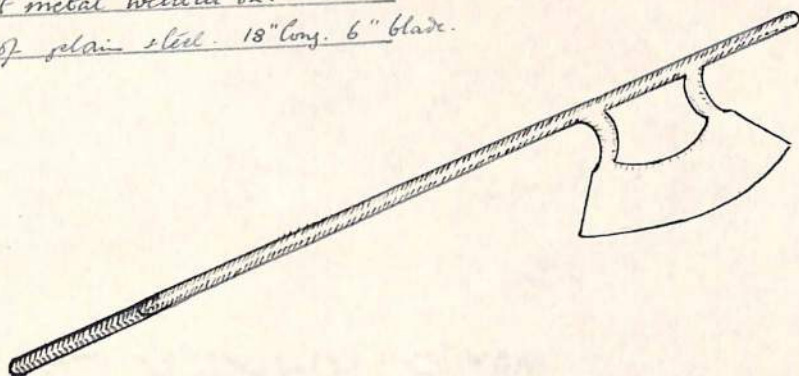


Rounded steel haft, with head
of flat metal welded on.
all of plain steel. 18" long. 6" blade.

ONE



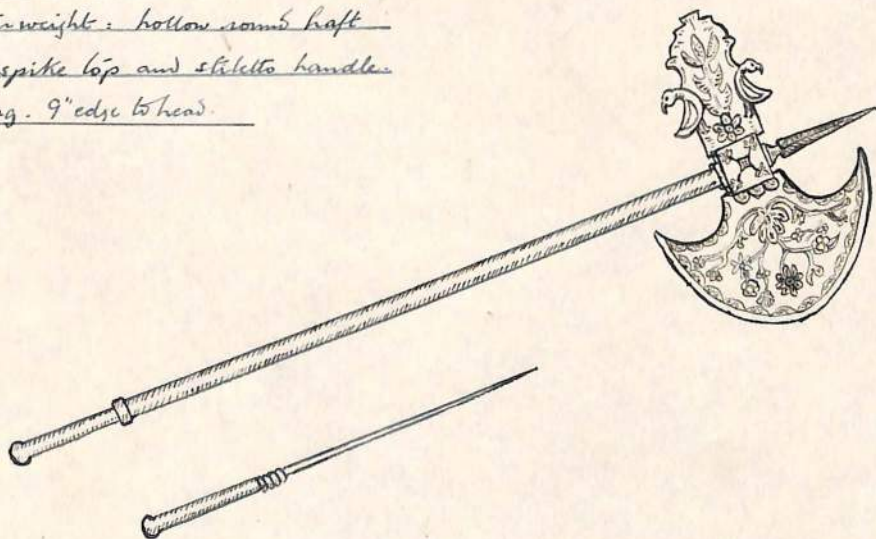
SOUTH INDIAN BATTLE AXE. "TABAR"

ANDAMAN ISLANDS. 15TH CENTURY.

ABORIGINAL TRIBES OF INDIA.

Engraved and embossed blade with
counterweight: hollow round haft
screw spike top and stiletto handle.
20" long. 9" edge to head.

ONE.



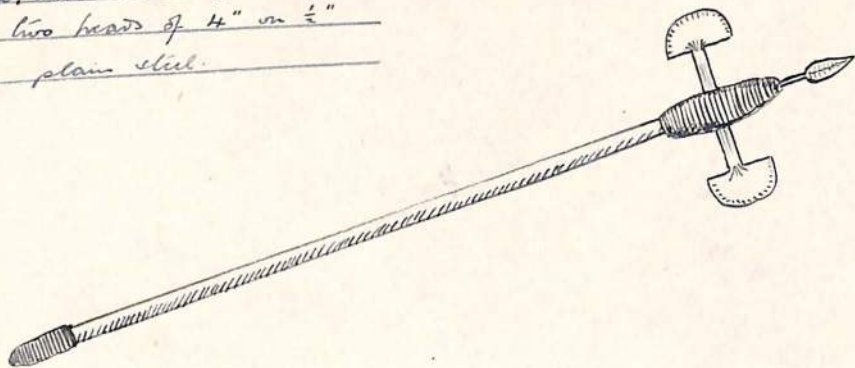
CENTRAL INDIAN BATTLE AXE. "TABAR"

CUTCH. 16TH CENTURY.

STILETTO. SCREWED INTO HILT.

24" wood, wire bound shaft. Spikes
tips; and two heads of 4" on $\frac{1}{2}$ "
necks. plain steel.

ONE

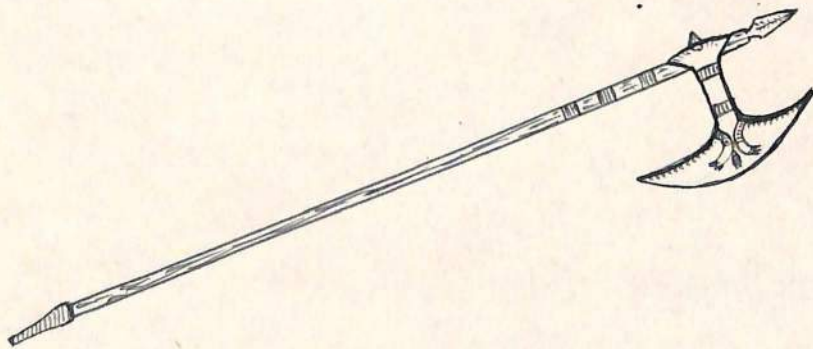


NATIVE BATTLE AXE.

SOLOMON ISLANDS.

26" wood shaft, with steel tipped ends.
10" head on 3" neck overlapping
haft. Engraved native work.

ONE

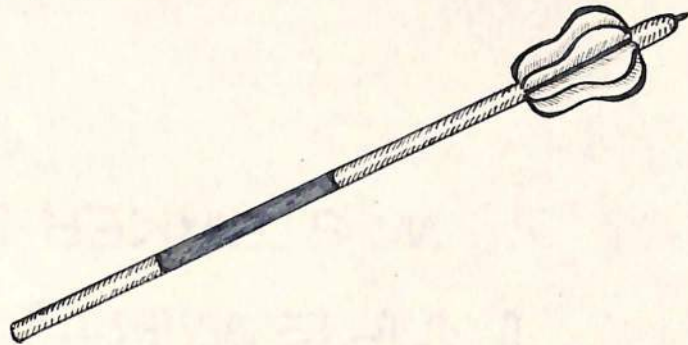


INDIAN BATTLE AXE.

KHONDS OF ORISSA. 15th. CENTURY.

15" round steel shaft with 6"
velvet grip. 4" head with 8
plain blades fluted.

ONE

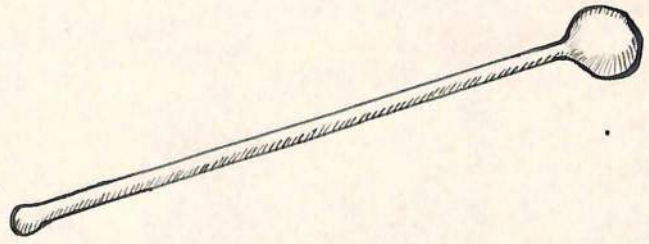


PERSIAN or AFGHAN MACE. "SHUSHBUR"

BUNDLEHAND. 17th. CENTURY.

20" long wood haft with 3"
diameter knob in one piece.

TWO

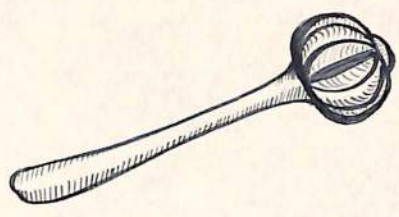


ZULU. XOSA. KNOBKERRY.

SOUTH AFRICA.

12" haft in one piece with
carved fluted head all of wood.
balances for throwing.

ONE.

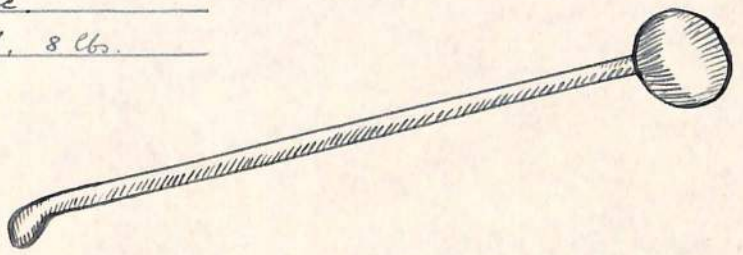


Fiji ISLAND THROWING CLUB.

FIJI ISLANDS.

22" shaft with 4" diameter
head in one piece.
Dark hardwood, 8 lbs.

Two.



BA-SUTO. KNOBKERRY.

SOUTH AFRICA