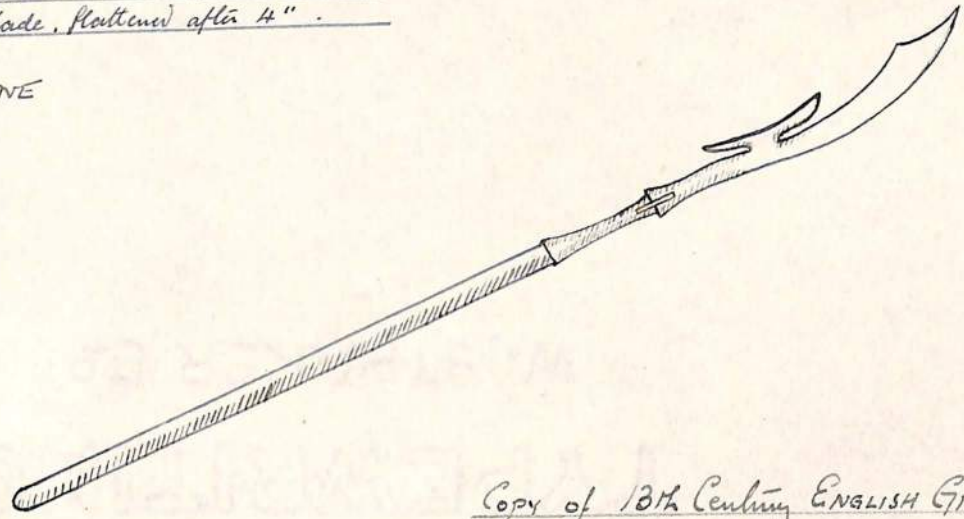


2 1/2 ft wooden haft with 18" steel blade, flattened after 4"

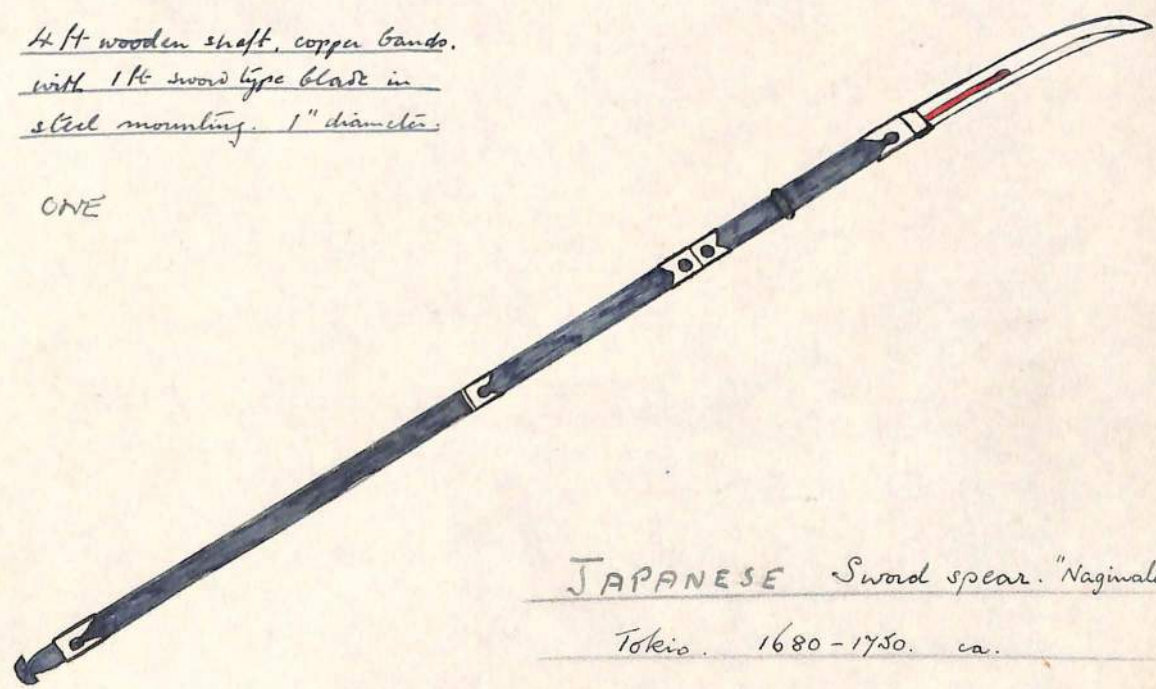
ONE



Copy of 18th Century ENGLISH GISARME.
probably about 1675.

4 ft wooden shaft, copper bands,
with 1 ft sword type blade in
steel mounting, 1" diameter.

ONE

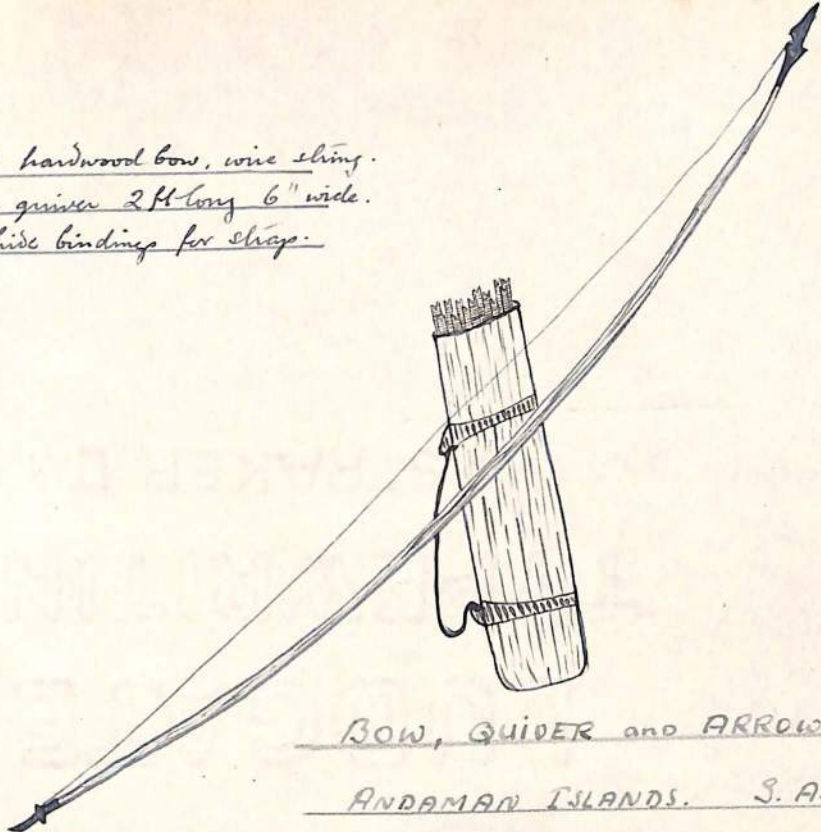


JAPANESE Sword spear. "Nagimata"

Tokio. 1680-1750. ca.

4 ft hardwood bow, wire string.
Hide quiver 2 ft long 6" wide.
two hide bindings for straps.

ONE

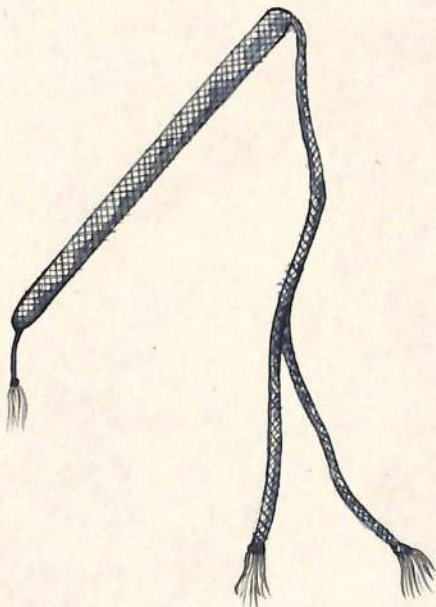


BOW, QUIVER and ARROWS.

ANDAMAN ISLANDS. S. ASIATIC TRIBES.

14" leather bound wood handle
with thong plaited leather 20"
dividing into two for 8 inches.

ONE.

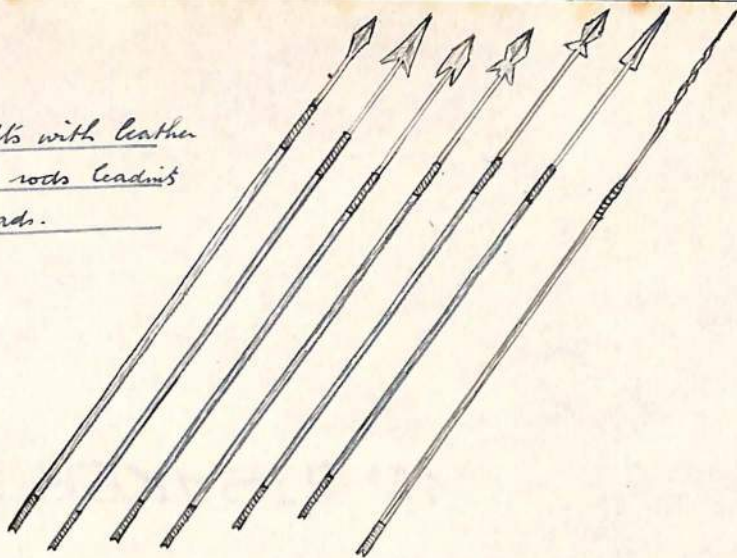


NATIVE HIDE WHIP

JAVA DUTCH EAST INDIES.

18" cane shafts with leather
bindings to steel rods leading
to barbed 2" heads.

20.

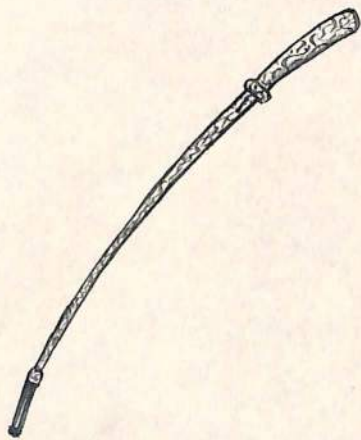


NATIVE ARROWS.

ANDAMAN ISLANDS.

12" Engraved steel taper rod.
with divided end for lash fitting.

ONE.

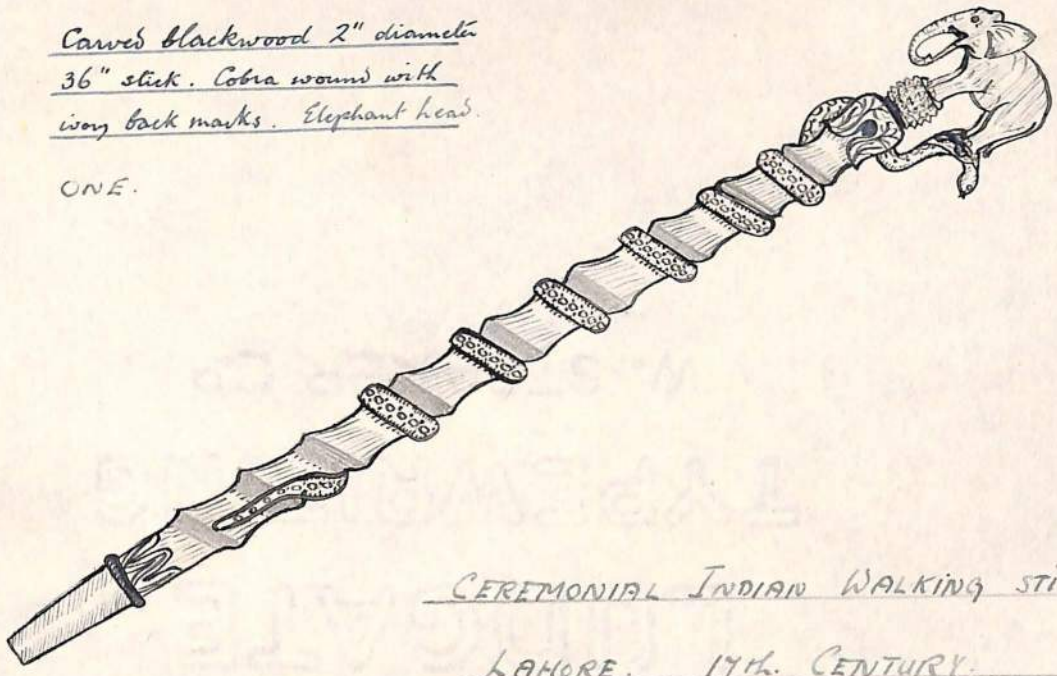


PERSIAN LASH HANDLE

KABUL. 17th CENTURY.

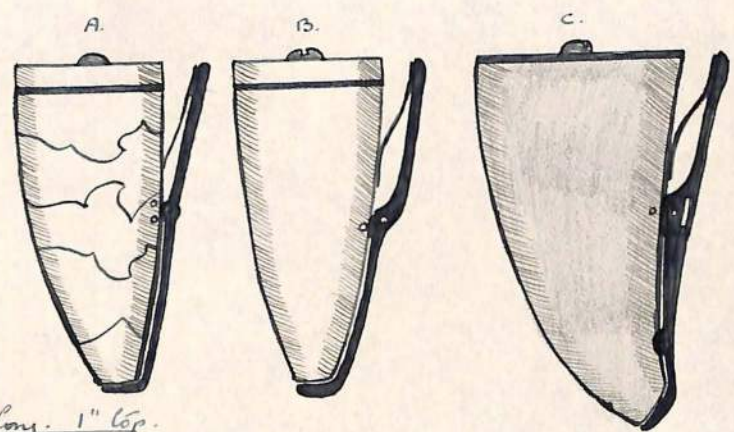
Carved blackwood 2" diameter
36" stick. Cobra wound with
ivory back marks. Elephant head.

ONE.



CEREMONIAL INDIAN WALKING STICK.
LAHORE. 17th. CENTURY.

THREE.



A.B. Ivory. C. horn 3" long. 1" top.
Spring lever to open end.
top swivels for filling.

English Powder flasks.
Late 18th Century.